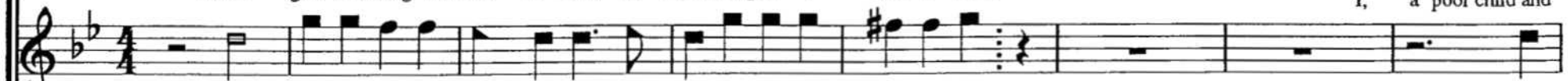


G Minor William Cowper, 1779.

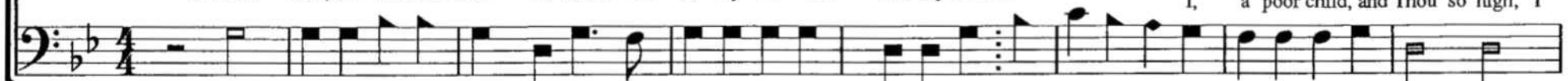
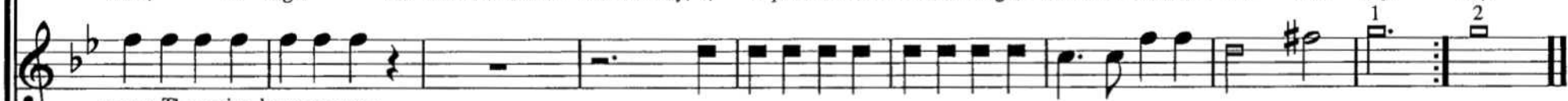
Oliver Holden, 1803.



1. For - give the song that falls so low, be - neath the grat - i - tude I owe.

It means Thy praise, how  
I, a poor child and

2. Great God, and wilt Thou con - de - scend To be my Fa - ther and my Friend.

It means Thy praise, how - ev - er poor, It  
I, a poor child, and Thou so high, IIt means Thy praise, how - ev - er poor, It means Thy  
I, a poor child, and Thou so high, I, a poorev - er poor, An an - gel's song can do no more, It means Thy praise, however poor, An an - gel's song can do no more. more.  
Thou, so high. The Lord of earth and air and sky, I, a poor child, and Thou, so high, The Lord of earth, and air, and sky. sky.means Thy praise, however poor,  
a poor child, and Thou so high,means Thy praise, however poor,  
a poor child, and Thou so high,It means Thy praise, however poor, An an - gel's song can do no more. more.  
I, a poor child, and Thou, so high, The Lord of earth, and air, and sky. sky.praise, how - ev - er poor, An an - gel's song can do no more,  
child and Thou so high, The Lord of earth and air and sky,